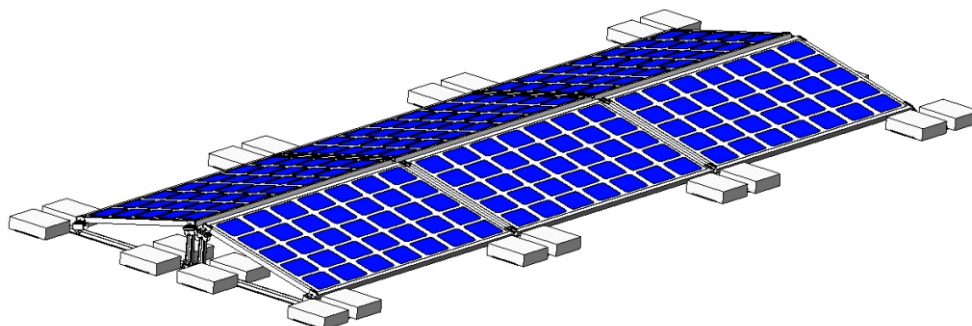


# Instructiuni instalare sistem prindere pentru acoperis plat

**Greutate mica** -Structura din aluminiu este mai usoara decat otelul, facand astfel mai facil procesul de transportare si instalare.

**Usor de instalat** -Toate elementele componente sunt preasamblate din fabrica, ceea ce salveaza timp si efort.

**Prietenos cu mediul** - aluminiu anodizat sau vopsit in camp electrostatic - este foarte rezistent la coroziune si poate fi reciclat dupa cel putin 25 ani de utilizare.



## Unelte necesare instalarii



Cheie hexagonala 6mm



Cheie reglabila



Cheie dinamometrica pentru surub cu cap M10 sau M12



Masina de gaurit



Cheie tubulara



Nivela



Ruleta

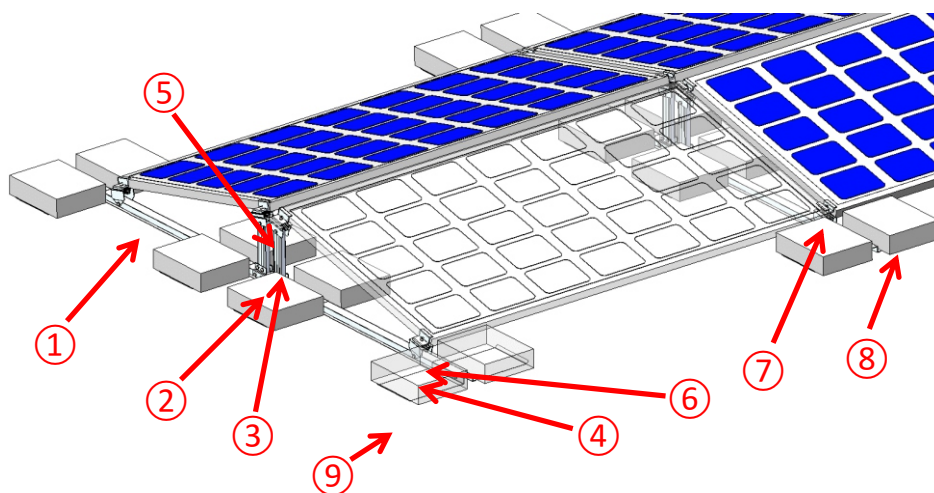



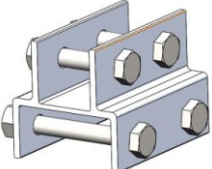
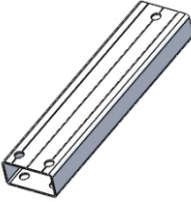
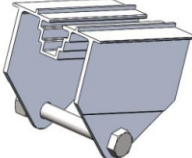
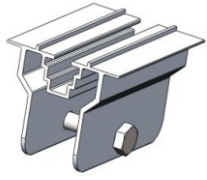
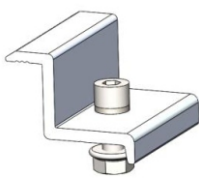
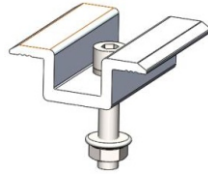

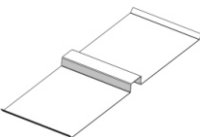
Funie



Ciocan lemn

# Componentele sistemului



① Sina	② Conexiune baza spate	③ Picior spate	④ Piesa conectare fata	⑤ Piesa conectare spate
				
⑥ Clema capat	⑦ Clema intermediara	⑧ Bloc beton	⑨ Placa fixare	
				

## Instalarea

Pasul 1: Asamblati structura

a. Montati conexiunea baza spate ② si piesa conectare fata ④ pe sina (fig. 1)

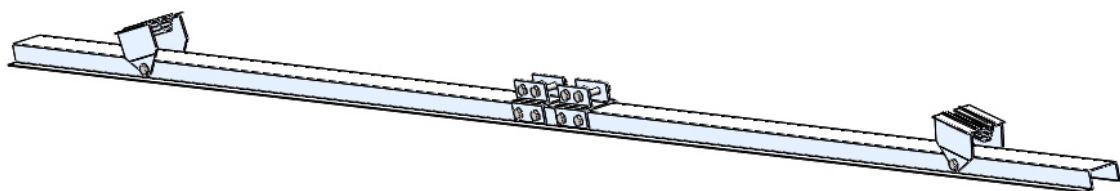


fig.1

b. Instalati picioarele din spate ③ la conexiunea baza spate ② (fig.2)

c. Instalati piesa conectare spate ⑤ la picioarele spate ③ (fig. 3)

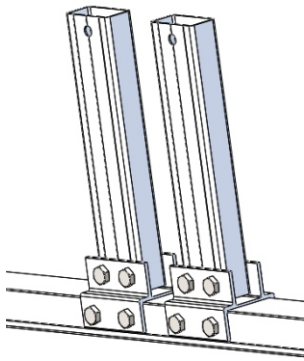


fig.2

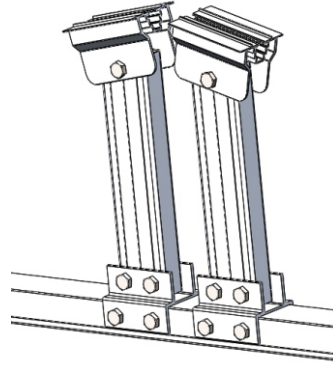


fig.3

### Pasul 2: Amplasarea structurii

a. Conform schitei, puneti structura asamblata pe pozitie, acordand atentie asezarii acesteia atat pe verticala cat si pe orizontala (utilizati o funie pentru a va asigura ca structura este dreapta)

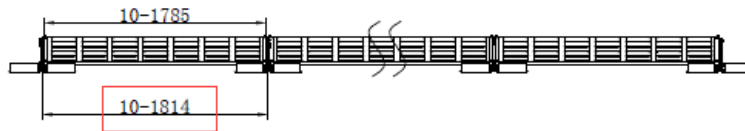


fig.4

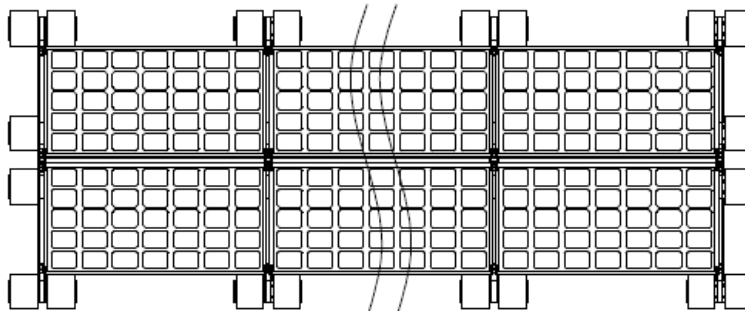


fig.5



fig.6

b. Pozitionati placa de fixare ⑨, fiecare placa se fixeaza cu 4 suruburi autofiletante. (fig.7)

Apoi asezati blocurile de beton ⑧

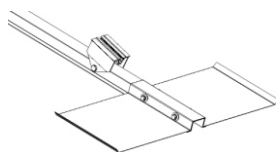


fig.7

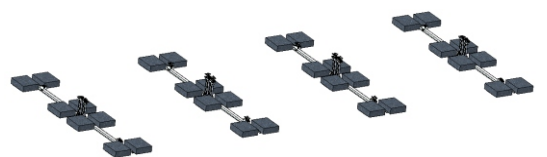


fig.8

### Pasul 3: Instalati modulul

a. Pozitionati panoul fotovoltaic pe piesa conectare fata si piesa conectare spate si fixati-l cu clemele intermediare si clemele de capat; fixati panoul fotovoltaic cu blocurile din beton pentru a preveni alunecarea acestuia.

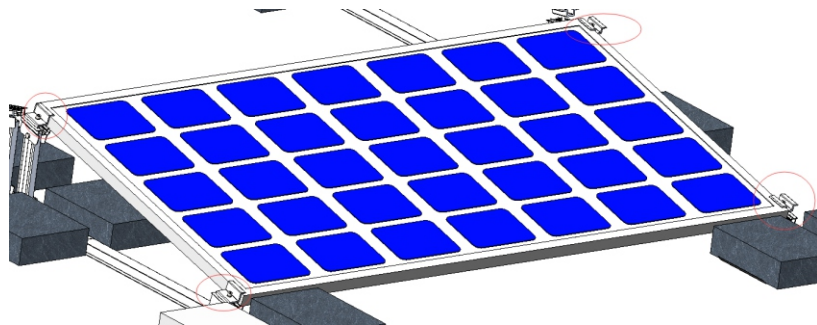


fig.9

b. Pozitionati panourile fotovoltaice in sir si strangeti usor clemele de capat si clemele intermediare; verificati daca panoul este pozitionat drept. Ajustati cu un ciocan de cauciuc daca este nevoie, apoi strangeti ferm clemele capat si clemele intermediare.

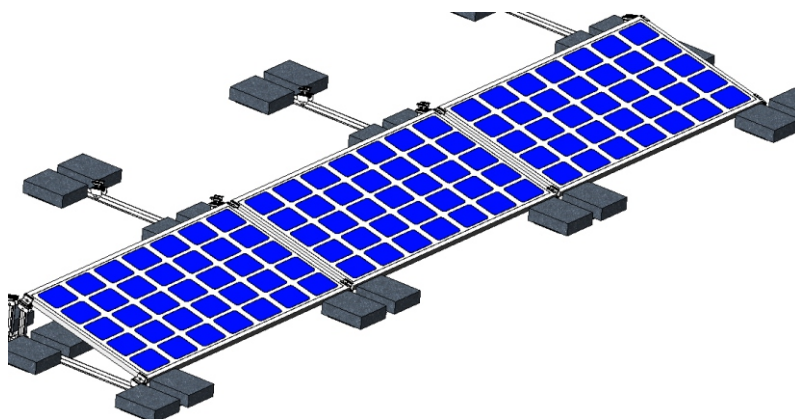


fig.10

c. Continuati procesul si pentru panourile fotovoltaice de pe cealalta parte.

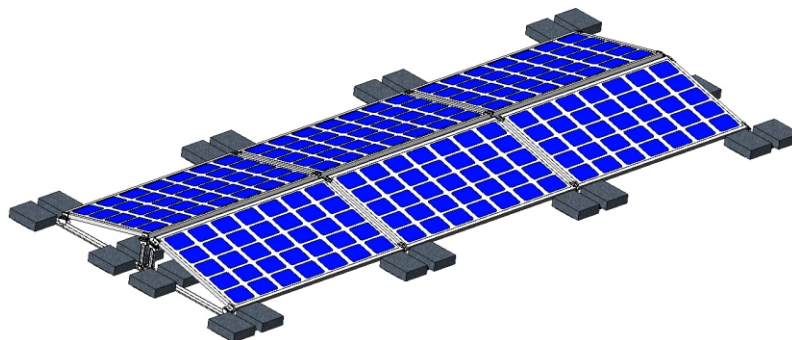


fig.11